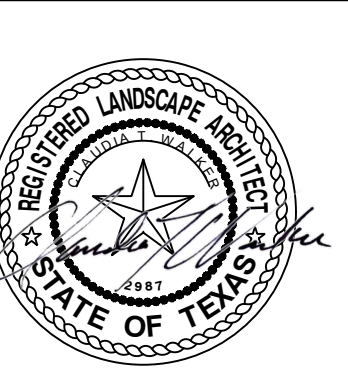


THIS PROJECT & THE IDEAS
HEREIN, AS AN INSTRUMENT
OF PROFESSIONAL SERVICE,
IS THE PROPERTY OF THE
ARCHITECT & IS NOT TO BE
USED IN WHOLE OR IN PART,
WITHOUT THE AUTHORIZATION OF
BURDITT CONSULTANTS, L.L.C.

ISSUANCE:
100% - FOR BID ONLY
10/17/2023



THE CITY OF BRYAN
MIDTOWN PARK MBG BOARDWALK IMPROVEMENTS
PROJECT NO. #####
206 W VILLA MARIA RD
BRYAN, TX 77801

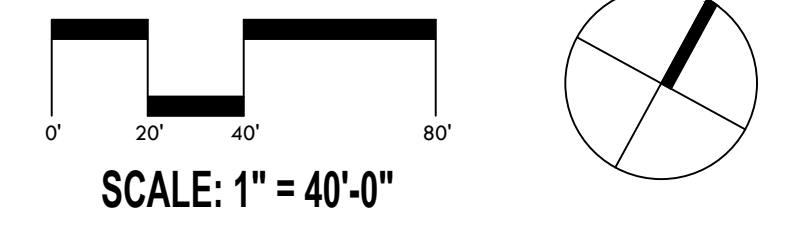
DESIGNER | RP, DC
DRAWER | RP
CHECKER | CTW, DC

ISSUANCES & REVISIONS		
NO.	DESCRIPTION	DATE
	ISSUE FOR BID	09/29/2023
	ADDENDUM D	10/17/2023

IF THIS LINE DOES NOT MEASURE ONE
INCH THIS DRAWING IS NOT TO SCALE
AND SHOULD NOT BE SCALED FOR
DIMENSIONAL INFORMATION.

LANDSCAPE DETAILS

L3.00
COPYRIGHT © 2023

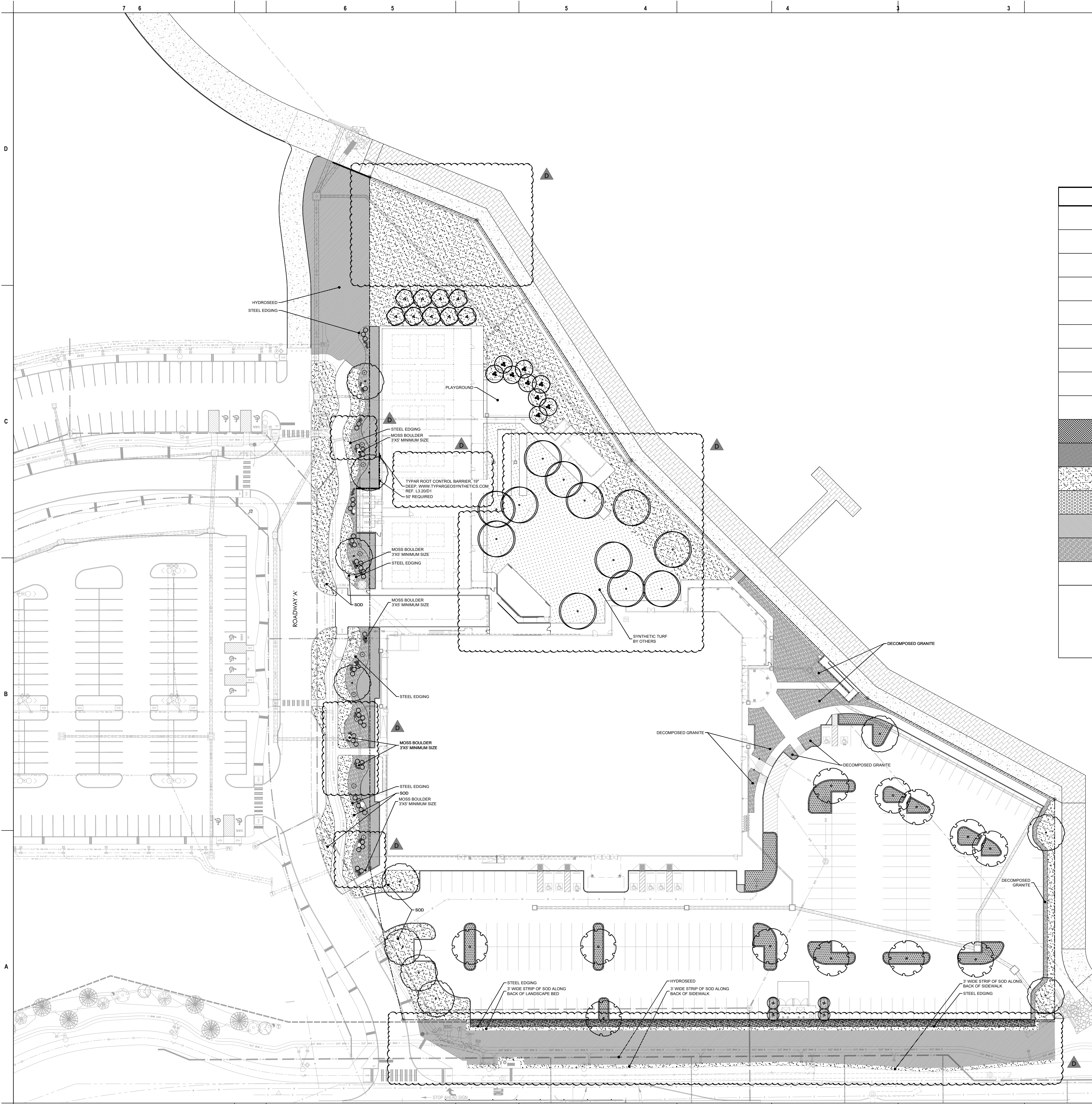


SYMBOL	SIZE	COMMON/SCIENTIFIC NAME	QTY	SF VALUE	TOTAL
○	65 GAL	BUR OAK <i>QUERCUS MACROCARPA</i>	11	250	2,750
○	7"-8" CAL	LIVE OAK <i>QUERCUS VIRGINIANA</i>	12	250	3,000
○	65 GAL	LIVE OAK <i>QUERCUS VIRGINIANA</i>	12	250	3,000
+	15 GAL	NELLIE R. STEVENS HOLLY <i>ILEX 'NELLIE R. STEVENS'</i>	4	100	400
⊕	30 GAL	BASHAM PARTY PINK CRAPE MYRTLE <i>LAGERSTROEMIA INDICA 'BASHAM'</i>	9	100	900
⊕	30 GAL	CHASTE TREE <i>VITEX AGNUS -CASTUS</i>	9	100	900
○	15 GAL	TEXAS SOTOL <i>DASYLIRION TEXANUM</i>	9	15	135
○	3 GAL	RED YUCCA <i>HESPERALOE PARVIFLORA</i>	45	10	450
•	1 GAL	DALLAS RED LANTANA <i>LANTANA CAMARA</i>	71	0	0
■	5 GAL	DWARF BURFORD HOLLY <i>ILEX CORNUTA 'DWARF BURFORD'</i>	370	10	3,700
■	3 GAL	DESPERADO TEXAS SAGE <i>LEUCOPHYLLUM FRUTESCENS 'DESPERADO'</i>	554	10	5,540
■	-	BERMUDA (SOLID SOD) <i>CYNODON DACULATA</i>	51,797 SF	0	0
■	1 GAL	BIG BLUE LIRIOPE <i>LIRIOPI MUSCARI 'BIG BLUE'</i>	2,660	0	0
■	-	HYDROSEED (COMMON BERMUDA)	9,107 SF	0	0
■	-	DECOMPOSED GRANITE	8,318 SF	0	0
TOTAL AREA PROVIDED:			20,775 SF		

LANDSCAPE REQUIREMENTS:
1) 15% DEVELOPED AREA 5.84 ACRES (245,929 SF) = 36,889 SF LANDSCAPING
2) NOT LESS THAN 50% OF REQUIRED AREA SHALL BE TREES -- 18,445 SF REQ'D; 10,950 PROVIDED
3) NOT LESS THAN 50% OF TREE PLANTED SHALL BE CANOPY; 9,222 SF REQ'D; 8,750 PROVIDED
4) ALL PARKING ISLANDS MUST HAVE A CANOPY TREE
TOTAL AREA REQUIRED: 36,889 SF
LANDSCAPE AREA PROVIDED: 20,775 SF

GENERAL NOTE: ALL LANDSCAPING SHALL BE FULLY IRRIGATED.

- Remove all trees along Villa Maria frontage.
- Removed 4 trees against building along 'Roadway A.'
- Removed 5 trees along boardwalk edge.
- Adjusted quantity of trees.
- Added root barrier.
- Added 12 - 7" cal. Live Oaks



THIS PROJECT & THE IDEAS HEREIN, AS AN INSTRUMENT OF PROFESSIONAL SERVICE, IS THE PROPERTY OF THE ARCHITECT & IS NOT TO BE USED IN WHOLE OR IN PART, WITHOUT THE AUTHORIZATION OF BURDITT CONSULTANTS, L.L.C.

ISSUANCE:

100% - FOR BID ONLY
10/17/2023

SEAL:



THE CITY OF BRYAN
MIDTOWN PARK MBG BOARDWALK IMPROVEMENTS
 PROJECT NO. #####
 206 W VILLA MARIA RD
 BRYAN, TX 77801

DESIGNER | RP, DC
DRAWER | RP
CHECKER | CTW, DC

ISSUANCES & REVISIONS

NO.	DESCRIPTION	DATE
	ISSUE FOR BID	09/29/2023
	ADDENDUM D	10/17/2023

1 INCH
IF THIS LINE DOES NOT MEASURE ONE INCH THIS DRAWING IS NOT TO SCALE AND SHOULD NOT BE SCALED FOR DIMENSIONAL INFORMATION.

LANDSCAPE DETAILS

L3.21

TREES	QTY	COMMON/SCIENTIFIC NAME	SPACING	CONT.	CAL.	HEIGHT	SPREAD	COMMENT
	11	BUR OAK <i>QUERCUS MACROCARPA</i>	-	65 GAL	3.5"	12'-14'	6'-7'	SINGLE TRUNK. DISEASE FREE AND IN VIGOROUS CONDITION. TREE STAKE SOLUTIONS. TREE FORM.
	12	LIVE OAK <i>QUERCUS VIRGINIANA</i>	-	65 GAL	7"-8"	12'-14'	6'-7'	SINGLE TRUNK. DISEASE FREE AND IN VIGOROUS CONDITION. JESSE SHULSE WITH ENVIRONMENTAL DESIGN, INC. P: 214.251.9085
	12	LIVE OAK <i>QUERCUS VIRGINIANA</i>	-	65 GAL	3.5"	12'-14'	6'-7'	SINGLE TRUNK. DISEASE FREE AND IN VIGOROUS CONDITION. TREE STAKE SOLUTIONS.
ORNAMENTAL TREES	QTY	COMMON/SCIENTIFIC NAME	SPACING	CONT.	CAL.	HEIGHT	SPREAD	COMMENT
	4	NELLIE R. STEVENS HOLLY <i>ILEX 'NELLIE R. STEVENS'</i>	-	15 GAL	1"-1.25"	5'-7'	3'-4'	STANDARD (SINGLE TRUNK.) DISEASE FREE AND IN VIGOROUS CONDITION. TREE STAKE SOLUTIONS.
	9	BASHAM'S PARTY PINK CRAPE MYRTLE <i>LAGERSTROEMIA INDICA 'BASHAM'</i>	-	30 GAL	-	8'-10'	4'-5'	MULTI-TRUNK. DISEASE FREE AND IN VIGOROUS CONDITION. TREE STAKE SOLUTIONS.
	9	CHASTE TREE <i>VITEX AGNUS-CASTUS</i>	-	30 GAL	-	8'-10'	4'-5'	MULTI-TRUNK. DISEASE FREE AND IN VIGOROUS CONDITION. TREE STAKE SOLUTIONS.
SHRUBS	QTY	COMMON/SCIENTIFIC NAME	SPACING	CONT.	CAL.	HEIGHT	SPREAD	COMMENT
	9	TEXAS SOTOL <i>DASYLIRION TEXANUM</i>	36" O.C.	15 GAL	-	24"	18"	FULL, SYMMETRICAL FOLIAGE. DISEASE FREE AND IN VIGOROUS CONDITION. TRIANGULAR SPACING.
	45	RED YUCCA <i>HESPERALOE PARVIFLORA</i>	18" O.C.	3 GAL	-	18"	12"	FULL, SYMMETRICAL FOLIAGE. DISEASE FREE AND IN VIGOROUS CONDITION. TRIANGULAR SPACING.
SHRUB / GROUNDCOVER AREA	QTY	COMMON/SCIENTIFIC NAME	SPACING	CONT.	CAL.	HEIGHT	SPREAD	COMMENT
	370	DWARF BURFORD HOLLY <i>ILEX CORNUTA 'DWARF BURFORD'</i>	36" O.C.	5 GAL	-	36"	24"	FULL, SYMMETRICAL FOLIAGE. DISEASE FREE AND IN VIGOROUS CONDITION. TRIANGULAR SPACING.
	71	DALLAS RED LANTANA <i>LANTANA CAMARA</i>	18" O.C.	1 GAL	-	8"	12"	FULL, SYMMETRICAL FOLIAGE. DISEASE FREE AND IN VIGOROUS CONDITION. TRIANGULAR SPACING.
	724	DESPERADO TEXAS SAGE <i>LEUCOPHYLLUM FRUTESCENS 'DESPERADO'</i>	30" O.C.	3 GAL	-	36"	24"	FULL, SYMMETRICAL FOLIAGE. DISEASE FREE AND IN VIGOROUS CONDITION. TRIANGULAR SPACING.
	48,754 SF	CELEBRATION BERMUDA GRASS <i>CYNODON DACTYLON 'CELEBRATOIN'</i>	-	-	-	-	-	FULL AND WEED FREE. SOLID SOD MINIMUM 16" ADJACENT TO ALL CURBS AND WALKS.
	2,660	BIG BLUE LIRIOPE <i>LIRIOPE MUSCARI 'BIG BLUE'</i>	18" O.C.	1 GAL	-	8"	12"	FULL, SYMMETRICAL FOLIAGE. DISEASE FREE AND IN VIGOROUS CONDITION. TRIANGULAR SPACING.
	9,070	DECOMPOSED GRANITE	-	-	-	-	-	REFERENCE LANDSCAPE DETAILS FOR REQUIREMENTS.
	4,876 SF	HYDROSEED (COMMON BERMUDA)	-	-	-	-	-	HYDROSEED ALL DISTURBED AREAS. REFERENCE SPECIFICATIONS FOR SEED MIX.
	3,306 LF	STEEL EDGING	-	-	-	-	-	1/4" X 16" BLACK
		MOSS BOULDER	-	-	-	-	-	MOSS ROCK BOULDER BURIED +/- 3" DEEP. 24" X 36" MINIMUM.

Adjusted plant quantities.

A1 PLANT SCHEDULE

